

PURSUANT TO A.R.S. §38-431.01, THE GILA COUNTY BOARD OF SUPERVISORS WILL HOLD A MEETING AT THE GILA COUNTY COURTHOUSE, BOARD OF SUPERVISORS' HEARING ROOM, 1400 EAST ASH STREET, GLOBE, ARIZONA. ONE OR MORE BOARD MEMBERS MAY PARTICIPATE IN THE MEETING BY TELEPHONE CONFERENCE CALL OR BY INTERACTIVE TELEVISION VIDEO (ITV). THE MEETING IS ALSO TELEVISED TO THE GILA COUNTY COMPLEX, BOARD OF SUPERVISORS' CONFERENCE ROOM, 610 E. HIGHWAY 260, PAYSON, ARIZONA.

**NOTE:** Per the most recent guidelines from the federal government regarding COVID-19 and to protect citizens, no citizens will be allowed in the Board of Supervisors' hearing room at the Globe Courthouse or at the County Complex, Board of Supervisors' conference room in Payson. The only exception to this statement is for public hearings. Citizens may attend the public hearing in person, one at a time, in Globe or in Payson to provide comments. A face mask must be worn while in the building; however, it may be removed while addressing the Board of Supervisors.

Citizens may watch the Board meeting live-streamed at:

<https://www.youtube.com/channel/UChCHWVqrI5AmJKbvYbO-k2A/live>

Citizens may submit written comments related to the March 29th Work Session agenda by no later than 5 p.m. on Monday, March 28th, by emailing to the Clerk of the Board at [msheppard@gilacountyaz.gov](mailto:msheppard@gilacountyaz.gov) or calling 928-402-8757. Citizens may also submit written comments during the meeting through YouTube. Please include the meeting date, agenda item number, your name and residence address in the email.

---

## **WORK SESSION - TUESDAY, MARCH 29, 2022 - 10:00 A.M.**

1. **CALL TO ORDER - PLEDGE OF ALLEGIANCE**
2. **REGULAR AGENDA ITEMS:**
  - A. Information/Discussion to discuss any needed changes to the maps presented to the Board of Supervisors at its January 25, 2022, Work Session by the Gila County Redistricting Advisory Committee for possible redistricting of Supervisorial Districts, and any future related Board actions. **(Tim Humphrey)**
  - B. Information/Discussion regarding the needs of elected offices and County departments for the use of the Gila County Tommie Cline Martin Complex multi-use room. **(Tim Humphrey)**

3. **CALL TO THE PUBLIC:** A call to the public is held for public benefit to allow individuals to address the Board of Supervisors on any issue within the jurisdiction of the Board of Supervisors. Board members may not discuss items that are not specifically identified on the agenda. Therefore, pursuant to Arizona Revised Statute §38-431.01(H), at the conclusion of an open call to the public, individual members of the Board of Supervisors may respond to criticism made by those who have addressed the Board, may ask staff to review a matter or may ask that a matter be put on a future agenda for further discussion and decision at a future date.
4. At any time during this meeting pursuant to A.R.S. §38-431.02(K), members of the Board of Supervisors and the County Manager may present a brief summary of current events. No action may be taken on information presented.

IF SPECIAL ACCOMMODATIONS ARE NEEDED, PLEASE CONTACT THE RECEPTIONIST AT (928) 425-3231 AS EARLY AS POSSIBLE TO ARRANGE THE ACCOMMODATIONS. FOR TTY, PLEASE DIAL 7-1-1 TO REACH THE ARIZONA RELAY SERVICE AND ASK THE OPERATOR TO CONNECT YOU TO (928) 425-3231.

THE BOARD MAY VOTE TO HOLD AN EXECUTIVE SESSION FOR THE PURPOSE OF OBTAINING LEGAL ADVICE FROM THE BOARD'S ATTORNEY ON ANY MATTER LISTED ON THE AGENDA PURSUANT TO A.R.S. §38-431.03(A)(3).

THE ORDER OR DELETION OF ANY ITEM ON THIS AGENDA IS SUBJECT TO MODIFICATION AT THE MEETING.

**ARF-7162**

**2. A.**

**Work Session**

Meeting Date: 03/29/2022

Submitted For: Tim Humphrey, Board of Supervisors-District 2

Submitted By: Terry Links, Executive Assistant

Department: Board of Supervisors-District 2

---

Information

Request/Subject

Review of the Final Draft Gila County Supervisorial Redistricting Maps and Discuss Future Board Action, if Needed.

Background Information

On September 21, 2021, the Board of Supervisors appointed members to the Gila County Redistricting Advisory Committee. The purpose of the Committee was to interact with the public and review maps created and submitted by the public for the redistricting of the Supervisorial Districts and the Community College Districts. The Gila County website provided a mapping tool for public use to create and submit maps. The mapping tool inadvertently showed 37 voting precincts instead of the correct number of 39. Numerous County staff members and one elected official participated in the Committee meetings. A total of twenty-four maps were submitted for redistricting the Supervisorial Districts.

Of the twenty-four maps submitted, three maps were presented to the Board at its January 25, 2022, Work Session for review. One of the maps removed a Supervisor from his Supervisorial District. Jessica Scibelli, Senior Civil Deputy County Attorney, advised the Board that per SB (Senate Bill) 1107, the deadline for the Board to adopt redistricting maps is July 1, 2022.

Evaluation

The Gila County Redistricting Advisory Committee conducted numerous meetings. The public submitted maps which the Committee then reviewed. On January 25, 2022, during a Board of Supervisors' Work Session, the Committee presented 3 final maps. A lengthy discussion ensued about the 39 voting precincts being reduced to 37 voting precincts. The final maps were based on 37 voting precincts. The incorrect precinct number has not been addressed nor has the Gila County Redistricting Advisory Committee been given further direction.

Chairman Humphrey would like to obtain input from the other Board members and Ms. Scibelli on the "next steps" regarding the redistricting process.

### Conclusion

The Board members need to find out if any future action is required regarding the redistricting of Supervisorial Districts, which may include revising the final maps that were presented to the Board and deciding to continue to work with the Gila County Redistricting Advisory Committee or dissolve it.

### Recommendation

It would be advantageous for the Board to discuss any needed future action it may need to take regarding redistricting of the Supervisorial Districts to include the role of the Gila County Redistricting Advisory Committee in this process.

### Suggested Motion

Information/Discussion to discuss any needed changes to the maps presented to the Board of Supervisors at its January 25, 2022, Work Session by the Gila County Redistricting Advisory Committee for possible redistricting of Supervisorial Districts, and any future related Board actions. **(Tim Humphrey)**

---

### Attachments

BOS Default 39

BOS Map 2-39

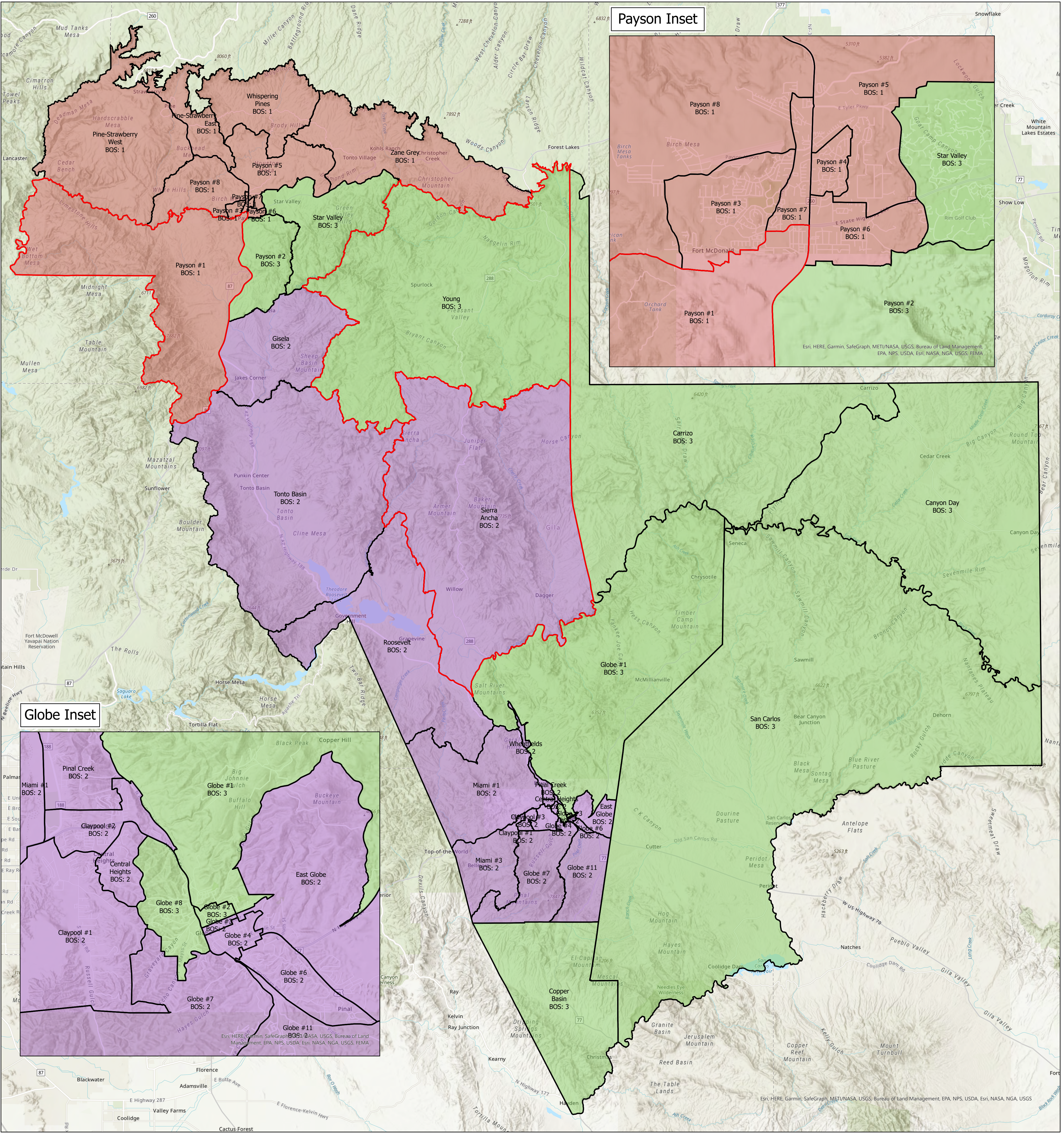
BOS Map 8 Mod 1-39

BOS Map 8 TSL15 with statistics

Deviations per map from ideal population

---





Data	BOS			Grand Total
	1	2	3	
Sum of TOTPOP	18677	16979	17616	53272
Sum of WHITE	15478	9966	7313	32757
Sum of HISP	1922	5013	2348	9283
Sum of BLACK	75	136	28	239
Sum of INDIAN	251	1014	7390	8655
Sum of OTHER	951	850	537	2338
Sum of VOTEAGE	16117	13529	13360	43006
Sum of VOTEWHITE	13765	8517	6387	28669
Sum of VOTEHISP	1370	3491	1674	6535
Sum of VOTEBLACK	56	108	15	179
Sum of VOTEINDIAN	176	765	4875	5816
Sum of VOTEOTHER	750	648	409	1807
Change	0	0	0	0
Deviation from Ideal (17,757)	920	-778	-141	1698
% Deviation from Ideal	5.18%	-4.38%	-0.79%	9.56%

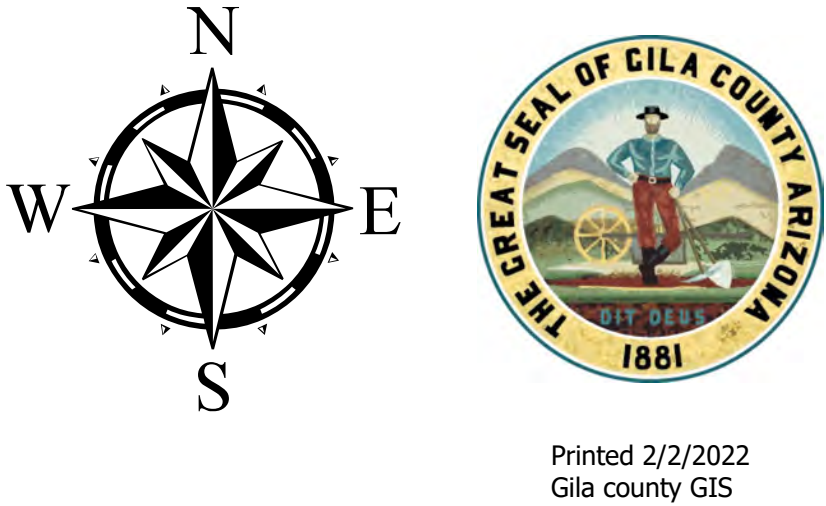
Data	% of Total			
	1	2	3	Overall
White All	82.87%	58.70%	41.51%	61.49%
Hispanic All	10.29%	29.52%	13.33%	17.43%
Black All	0.40%	0.80%	0.16%	0.45%
Indian All	1.34%	5.97%	41.95%	16.25%
Other All	-5.09%	-5.01%	-3.05%	-4.39%
Total Minority All	17.13%	41.30%	58.49%	38.51%
Total Minority Change	0.00%	0.00%	0.00%	
White Voter	85.41%	62.95%	47.81%	66.66%
Hispanic Voter	8.50%	25.80%	12.53%	15.20%
Black Voter	0.35%	0.80%	0.11%	0.42%
Indian Voter	1.09%	5.65%	36.49%	13.52%
Other Voter	4.65%	4.79%	3.06%	4.20%
Total Minority Voter	14.59%	37.05%	52.19%	33.34%
Total Minority Voter Change	0.00%	0.00%	0.00%	
Total Hispanic Voter Change	0.00%	0.00%	0.00%	
Total Indian Voter Change	0.00%	0.00%	0.00%	
Total Hispanic/Indian Voter Change	0.00%	0.00%	0.00%	

% Distribution				
1	2	3	Max Dev	
35.06%	31.87%	33.07%	3.19%	
47.25%	30.42%	22.32%	24.93%	
20.70%	54.00%	25.29%	33.30%	
31.38%	56.90%	11.72%	45.19%	
2.90%	11.72%	85.38%	82.48%	
40.68%	36.36%	22.97%	17.71%	
37.48%	31.46%	31.07%	6.41%	
48.01%	29.71%	22.28%	25.74%	
20.96%	53.42%	25.62%	32.46%	
31.28%	60.34%	8.38%	51.96%	
3.03%	13.15%	83.82%	80.79%	
41.51%	35.86%	22.63%	18.87%	

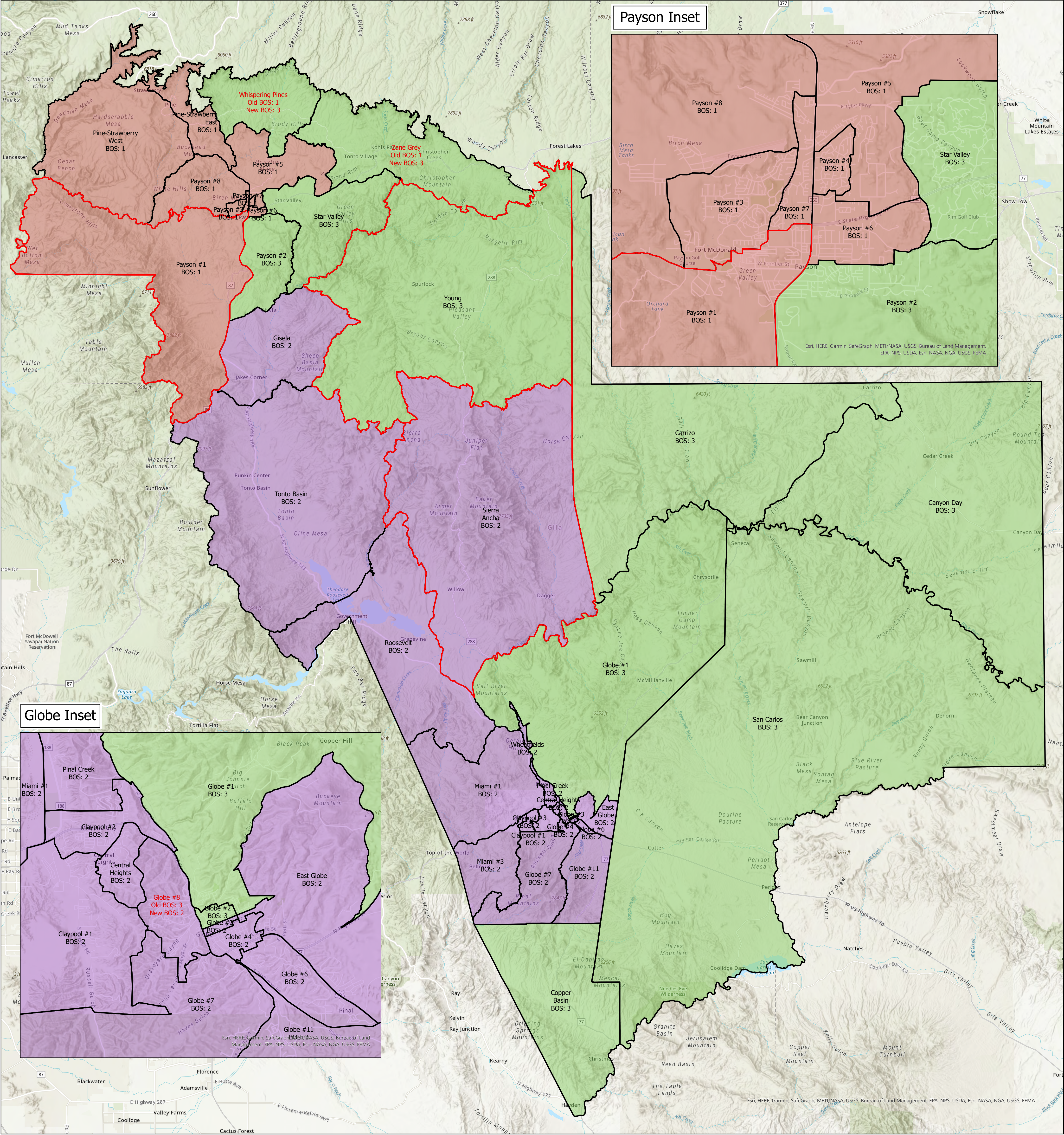
Map Based on:  
Status Quo 39  
Precincts

Duplicate Submittals:  
None

# Gila County Redistricting 2022 BOS Candidate No Change







	BOS			
Data	1	2	3	Grand Total
Sum of TOTPOP	17681	17910	17681	53272
Sum of WHITE	14592	10365	7800	32757
Sum of HISP	1852	5459	1972	9283
Sum of BLACK	73	137	29	239
Sum of INDIAN	247	1066	7342	8655
Sum of OTHER	917	883	538	2338
Sum of VOTEAGE	15229	14290	13487	43006
Sum of VOTEWHITE	12971	8868	6830	28669
Sum of VOTEHISP	1314	3844	1377	6535
Sum of VOTEBLACK	54	109	16	179
Sum of VOTEINDIAN	172	797	4847	5816
Sum of VOTEOTHER	718	672	417	1807
Change	-888	761	127	0
Deviation from Ideal (17,757)	-76	153	-76	229
% Deviation from Ideal	-0.43%	0.86%	-0.43%	1.29%

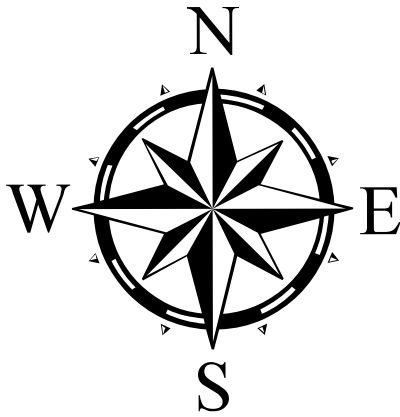
	% of Total			
Data	1	2	3	Overall
White All	82.53%	57.87%	44.12%	61.49%
Hispanic All	10.47%	30.48%	11.15%	17.43%
Black All	0.41%	0.76%	0.16%	0.45%
Indian All	1.40%	5.95%	41.52%	16.25%
Other All	-5.19%	-4.93%	-3.04%	-4.39%
Total Minority All	17.47%	42.13%	55.88%	38.51%
Total Minority Change	0.34%	0.82%	-2.60%	
White Voter	85.17%	62.06%	50.64%	66.66%
Hispanic Voter	8.63%	26.90%	10.21%	15.20%
Black Voter	0.35%	0.76%	0.12%	0.42%
Indian Voter	1.13%	5.58%	35.94%	13.52%
Other Voter	4.71%	4.70%	3.09%	4.20%
Total Minority Voter	14.83%	37.94%	49.36%	33.34%
Total Minority Voter Change	0.23%	0.90%	-2.83%	
Total Hispanic Voter Change	0.13%	1.10%	-2.32%	
Total Indian Voter Change	0.04%	-0.08%	-0.55%	
Total Hispanic/Indian Voter Change	0.17%	1.02%	-2.87%	

% Distribution				
1	2	3	Max Dev	
33.19%	33.62%	33.19%	0.43%	
44.55%	31.64%	23.81%	20.73%	
19.95%	58.81%	21.24%	38.86%	
30.54%	57.32%	12.13%	45.19%	
2.85%	12.32%	84.83%	81.98%	
39.22%	37.77%	23.01%	16.21%	
35.41%	33.23%	31.36%	4.05%	
45.24%	30.93%	23.82%	21.42%	
20.11%	58.82%	21.07%	38.71%	
30.17%	60.89%	8.94%	51.96%	
2.96%	13.70%	83.34%	80.38%	
39.73%	37.19%	23.08%	16.66%	

Map Based on:  
JAB01-73 Submittal  
Modified to 39  
Precincts/BOS  
suggestions

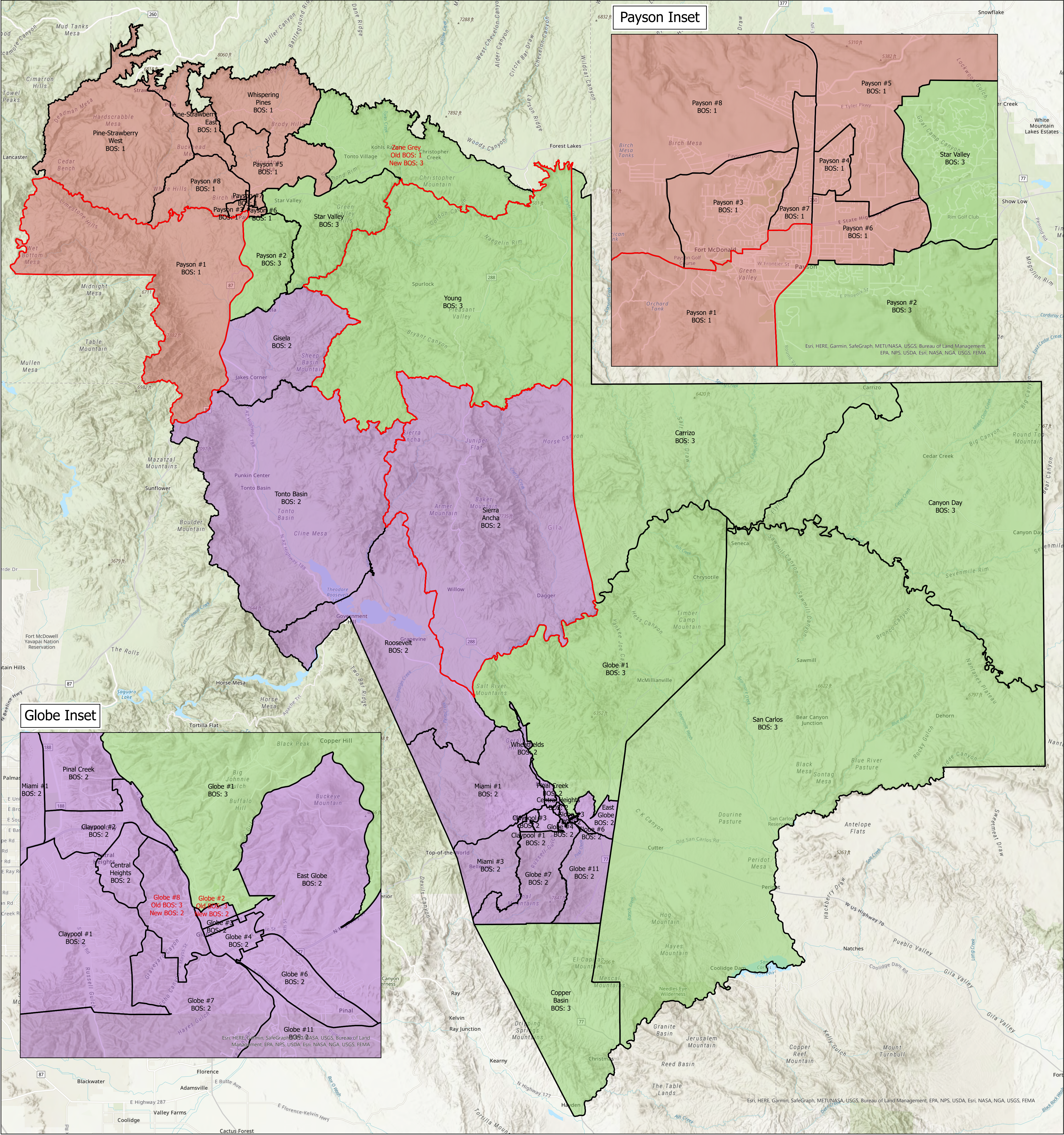
Duplicate Submittals:  
County 1-37

# Gila County Redistricting 2022 BOS Candidate Map 2 Mod 1



Printed 2/2022  
Gila county GIS





Data	BOS			
	1	2	3	Grand Total
Sum of TOTPOP	18001	18286	16985	53272
Sum of WHITE	14877	10556	7324	32757
Sum of HISP	1874	5596	1813	9283
Sum of BLACK	73	137	29	239
Sum of INDIAN	249	1090	7316	8655
Sum of OTHER	928	907	503	2338
Sum of VOTEAGE	15520	14579	12907	43006
Sum of VOTEWHITE	13233	9028	6408	28669
Sum of VOTEHISP	1330	3941	1264	6535
Sum of VOTEBLACK	54	109	16	179
Sum of VOTEINDIAN	174	817	4825	5816
Sum of VOTEOTHER	729	684	394	1807
Change	-597	1050	-453	0
Deviation from Ideal (17,757)	244	529	-772	1301
% Deviation from Ideal	1.37%	2.98%	-4.35%	7.33%

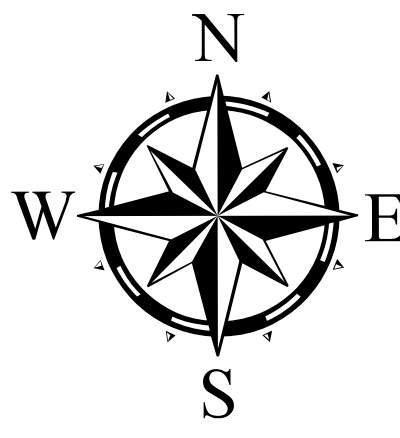
Data	% of Total			
	1	2	3	Overall
White All	82.65%	57.73%	43.12%	61.49%
Hispanic All	10.41%	30.60%	10.67%	17.43%
Black All	0.41%	0.75%	0.17%	0.45%
Indian All	1.38%	5.96%	43.07%	16.25%
Other All	-5.16%	-4.96%	-2.96%	-4.39%
Total Minority All	17.35%	42.27%	56.88%	38.51%
Total Minority Change	0.23%	0.97%	-1.61%	
White Voter	85.26%	61.92%	49.65%	66.66%
Hispanic Voter	8.57%	27.03%	9.79%	15.20%
Black Voter	0.35%	0.75%	0.12%	0.42%
Indian Voter	1.12%	5.60%	37.38%	13.52%
Other Voter	4.70%	4.69%	3.05%	4.20%
Total Minority Voter	14.74%	38.08%	50.35%	33.34%
Total Minority Voter Change	0.14%	1.03%	-1.84%	
Total Hispanic Voter Change	0.07%	1.23%	-2.74%	
Total Indian Voter Change	0.03%	-0.05%	0.89%	
Total Hispanic/Indian Voter Change	0.10%	1.18%	-1.84%	

% Distribution				
1	2	3	Max Dev	
33.79%	34.33%	31.88%	2.44%	
45.42%	32.23%	22.36%	23.06%	
20.19%	60.28%	19.53%	40.75%	
30.54%	57.32%	12.13%	45.19%	
2.88%	12.59%	84.53%	81.65%	
39.69%	38.79%	21.51%	18.18%	
36.09%	33.90%	30.01%	6.08%	
46.16%	31.49%	22.35%	23.81%	
20.35%	60.31%	19.34%	40.96%	
30.17%	60.89%	8.94%	51.96%	
2.99%	14.05%	82.96%	79.97%	
40.34%	37.85%	21.80%	18.54%	

Map Based on:  
JS01-37 Mod1 Submittal - reset to  
39 precincts and BOS edits

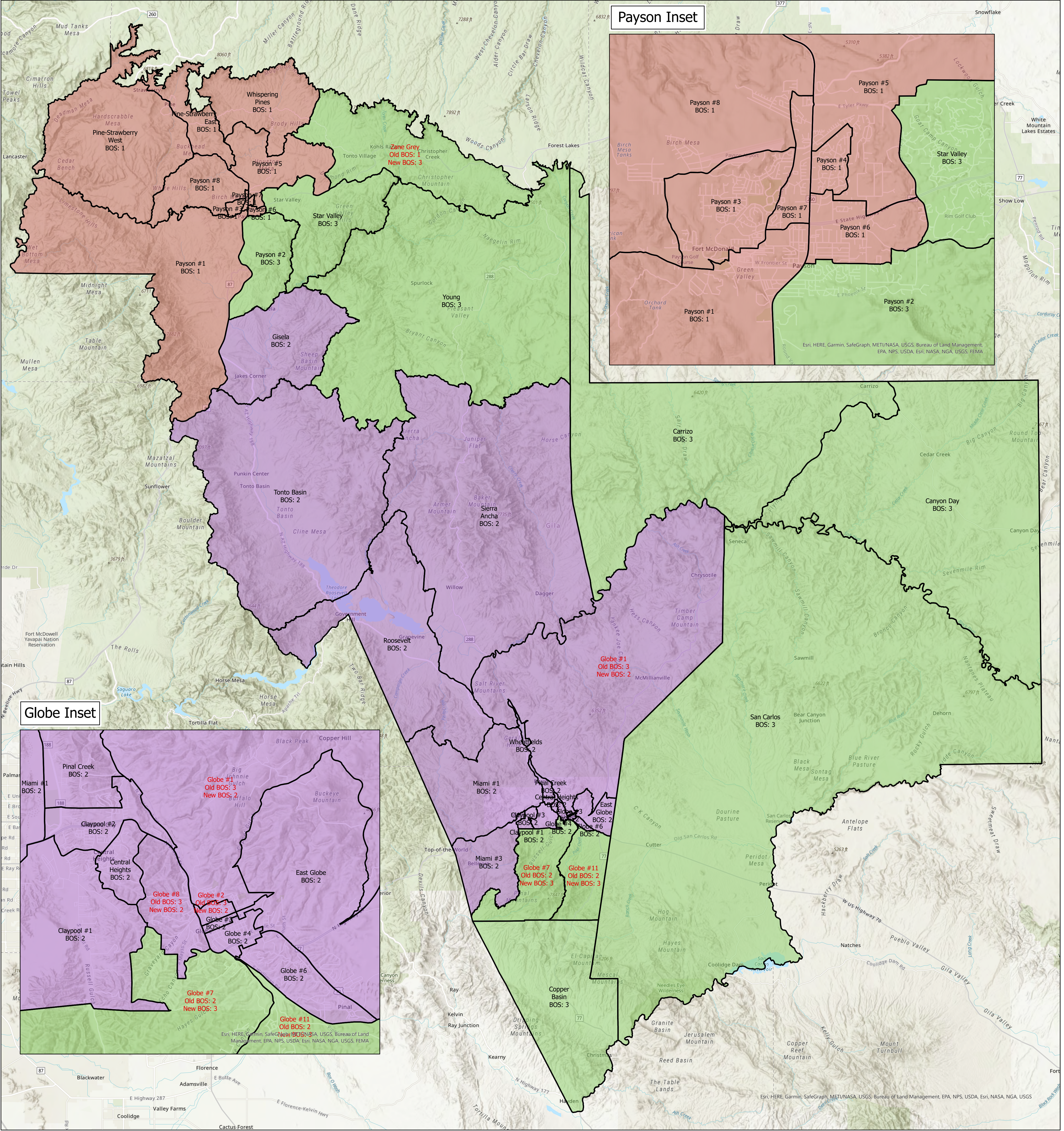
Duplicate Submittals:  
None

# Gila County Redistricting 2022 BOS Candidate Map 8 Mod1



Printed 2/8/2022  
Gila County GIS





Data	BOS			
	1	2	3	Grand Total
Sum of TOTPOP	18001	17301	17970	53272
Sum of WHITE	14877	9986	7894	32757
Sum of HISP	1874	5280	2129	9283
Sum of BLACK	73	132	34	239
Sum of INDIAN	249	1068	7338	8655
Sum of OTHER	928	835	575	2338
Sum of VOTEAGE	15520	13832	13654	43006
Sum of VOTEWHITE	13233	8546	6890	28669
Sum of VOTEHISP	1330	3737	1468	6535
Sum of VOTEBLACK	54	101	24	179
Sum of VOTEINDIAN	174	813	4829	5816
Sum of VOTEOTHER	729	635	443	1807
Change	-597	837	-240	0
Deviation from Ideal (17,757)	244	-456	213	700
% Deviation from Ideal	1.37%	-2.57%	1.20%	3.94%

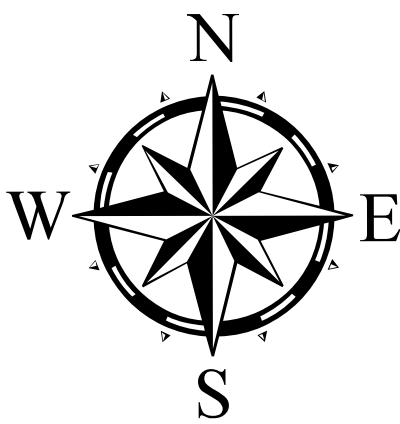
Data	% of Total			
	1	2	3	Overall
White All	82.65%	57.72%	43.93%	61.49%
Hispanic All	10.41%	30.52%	11.85%	17.43%
Black All	0.41%	0.76%	0.19%	0.45%
Indian All	1.38%	6.17%	40.83%	16.25%
Other All	-5.16%	-4.83%	-3.20%	-4.39%
Total Minority All	17.35%	42.28%	56.07%	38.51%
Total Minority Change	0.23%	0.81%	-1.65%	
White Voter	85.26%	61.78%	50.46%	66.66%
Hispanic Voter	8.57%	27.02%	10.75%	15.20%
Black Voter	0.35%	0.73%	0.18%	0.42%
Indian Voter	1.12%	5.88%	35.37%	13.52%
Other Voter	4.70%	4.59%	3.24%	4.20%
Total Minority Voter	14.74%	38.22%	49.54%	33.34%
Total Minority Voter Change	0.14%	1.06%	-1.97%	
Total Hispanic Voter Change	0.07%	1.31%	-2.38%	
Total Indian Voter Change	0.09%	0.05%	0.22%	
Total Hispanic/Indian Voter Change	0.10%	1.37%	-2.16%	

% Distribution				
1	2	3	Max Dev	
33.79%	32.48%	33.73%	1.31%	
45.42%	30.49%	24.10%	21.32%	
20.19%	56.88%	22.93%	36.69%	
30.54%	55.23%	14.23%	41.00%	
2.88%	12.34%	84.78%	81.91%	
39.69%	35.71%	24.59%	15.10%	
36.09%	32.16%	31.75%	4.34%	
46.16%	29.81%	24.03%	22.12%	
20.35%	57.18%	22.46%	36.83%	
30.17%	56.42%	13.41%	43.02%	
2.99%	13.98%	83.03%	80.04%	
40.34%	35.14%	24.52%	15.83%	

Map Based on:  
JS01-37 Mod1 Submittal - reset to  
39 precincts and BOS edits

Duplicate Submittals:  
None

# Gila County Redistricting 2022 BOS Candidate Map 8 Mod1 TLS15



Printed 3/15/2022  
Gila county GIS



Deviations from ideal per map presented versus unchanged map

<b><u>Current Population</u></b>	<b><u>Ideal Population</u></b>
<b>District 1 - 18677</b>	<b>17757</b>
<b>District 2 - 16979</b>	<b>17757</b>
<b>District 3 - 17616</b>	<b>17757</b>
<b>Total: 58272</b>	<b>Total: 58272</b>
<b><u>Map 8 Mod1 TSL15</u></b>	<b><u>Map 2 Mod 1</u></b>
<b>District 1    +244 / 1.37% from ideal</b>	<b>District 1    -76 / -0.43% from ideal</b>
<b>District 2    -456 / -2.57% from ideal</b>	<b>District 2    153 / 0.86% from ideal</b>
<b>District 3    231 / 1.20% from ideal</b>	<b>District 3    -76 / -0.43% from ideal</b>
<b>3.94% from ideal</b>	<b>1.29% from ideal</b>
<b>Map 8 Mod1</b>	<b>No change</b>
<b>District 1    244 / 1.37% from ideal</b>	<b>District 1    920 / 5.18% from ideal</b>
<b>District 2    529 / 2.98% from ideal</b>	<b>District 2    -778 / -4.38% from ideal</b>
<b>District 3    -772 / -4.35% from ideal</b>	<b>District 3    -141 / -0.79% from ideal</b>
<b>7.33% from ideal</b>	<b>9.56% from ideal</b>

**ARF-7165**

**2. B.**

**Work Session**

Meeting Date: 03/29/2022

Submitted By: Terry Links, Executive  
Assistant

Department: Board of Supervisors-District 2

---

Information

Request/Subject

Scheduling use of the Gila County Tommie Cline Martin Complex Multi-use Room.

Background Information

The new Gila County Tommie Cline Martin Complex in Payson is complete and the multi-use room will be available for use on April 18, 2022. The Gila County Superior Court would like priority access to the multi-use room Wednesday through Friday of each week. Sadie Bingham, Gila County Recorder, has also indicated that her Office and the Elections Department will have a need to use the multi-use room at various times during and after elections.

The Honorable Timothy Wright, Gila County Superior Court Presiding Judge, and Jonathan Bearup, Superior Court Administrator, have both met with Supervisors Humphrey and Cline separately regarding scheduling the use of the multi-use room. Ms. Bingham has also met with Supervisors Humphrey and Cline regarding use of the room.

Evaluation

Chairman Humphrey received an email on February 24, 2022, from Judge Wright advising him that the scheduling issue remains unresolved between the Superior Court and James Menlove, County Manager. Chairman Humphrey believes that it would be beneficial for the Board members to obtain an understanding of the specific need for the multi-use room, and to discuss possible options for scheduling the multi-use room so that the schedule will meet the needs of all involved parties.

Conclusion

It would be beneficial for the Board of Supervisors to obtain additional information regarding the intended use of the Gila County Tommie Cline Martin Complex multi-use room and discuss a schedule for said use.

Recommendation

It is recommended that the Board members discuss this issue during a Board of Supervisors' Work Session.

Suggested Motion

Information/Discussion regarding the needs of elected offices and County departments for the use of the Gila County Tommie Cline Martin Complex multi-use room. **(Tim Humphrey)**

---

Attachments

*No file(s) attached.*

---