

PURSUANT TO A.R.S. §38-431.01, THE GILA COUNTY BOARD OF SUPERVISORS WILL HOLD AN OPEN MEETING IN THE SUPERVISORS' HEARING ROOM, 1400 EAST ASH STREET, GLOBE, ARIZONA. ONE OR MORE BOARD MEMBERS MAY PARTICIPATE IN THE MEETING BY TELEPHONE CONFERENCE CALL OR BY INTERACTIVE TELEVISION VIDEO (ITV). **ANY MEMBER OF THE PUBLIC IS WELCOME TO ATTEND THE MEETING VIA ITV WHICH IS HELD AT 610 E. HIGHWAY 260, BOARD OF SUPERVISORS' CONFERENCE ROOM, PAYSON, ARIZONA.** THE AGENDA IS AS FOLLOWS:

WORK SESSION - TUESDAY, JUNE 25, 2019 - 10:30 A.M.

1. **CALL TO ORDER**
2. **REGULAR MEETING ITEMS:**
 - A. Information/Discussion regarding the activities of Cobre Valley Indoor Farms and the Apache Hemp R&D Project 2019. **(Elvin Fant/Charles Vargas)** Presented
 - B. Information/Discussion regarding County landfills, the current state of recycling, and an update on the Dollar Day Recycling Program. **(Steve Sanders)** Presented
3. **CALL TO THE PUBLIC:** A call to the public is held for public benefit to allow individuals to address the Board of Supervisors on any issue within the jurisdiction of the Board of Supervisors. Board members may not discuss items that are not specifically identified on the agenda. Therefore, pursuant to Arizona Revised Statute §38-431.01(H), at the conclusion of an open call to the public, individual members of the Board of Supervisors may respond to criticism made by those who have addressed the Board, may ask staff to review a matter or may ask that a matter be put on a future agenda for further discussion and decision at a future date. No Comments

- | | | |
|----|------------------------------------------------------------------------------------------------------------------------------------------------------------------------------------------------------------------------------|----------------------|
| 4. | At any time during this meeting pursuant to A.R.S. §38-431.02(K), members of the Board of Supervisors and the County Manager may present a brief summary of current events. No action may be taken on information presented. | Comments
Provided |
|----|------------------------------------------------------------------------------------------------------------------------------------------------------------------------------------------------------------------------------|----------------------|

IF SPECIAL ACCOMMODATIONS ARE NEEDED, PLEASE CONTACT THE RECEPTIONIST AT (928) 425-3231 AS EARLY AS POSSIBLE TO ARRANGE THE ACCOMMODATIONS. FOR TTY, PLEASE DIAL 7-1-1 TO REACH THE ARIZONA RELAY SERVICE AND ASK THE OPERATOR TO CONNECT YOU TO (928) 425-3231.

THE BOARD MAY VOTE TO HOLD AN EXECUTIVE SESSION FOR THE PURPOSE OF OBTAINING LEGAL ADVICE FROM THE BOARD'S ATTORNEY ON ANY MATTER LISTED ON THE AGENDA PURSUANT TO A.R.S. §38-431.03(A)(3).

THE ORDER OR DELETION OF ANY ITEM ON THIS AGENDA IS SUBJECT TO MODIFICATION AT THE MEETING.

ARF-5522

2. A.

Work Session

Meeting Date: 06/25/2019

Submitted By: Marian Sheppard, Clerk
of the Board

Department: Clerk of the Board of Supervisors

Information

Request/Subject

Cobre Valley Indoor Farms and the Apache Hemp R&D Project 2019.

Background Information

Elvin Fant and Charles Vargas briefly addressed the Board of Supervisors during a call to the public at the Board's May 28, 2019, meeting. Mr. Fant is the President of Cobre Valley Indoor Farms and Mr. Vargas is the Director of the Chamber of Commerce for the Apache Nation. In summary, Mr. Fant and Mr. Vargas would like to partner with the County and others with regard to economic development, so they requested to be placed on a future Board agenda to talk about partnering with the County on Cobre Valley Indoor Farms and or the Apache Hemp R&D Project 2019. James Menlove, County Manager, authorized Mr. Fant and Mr. Vargas to provide a presentation at the Board's June 25th Work Session.

Evaluation

It would be beneficial for the Board and the public to learn about the activities of Cobre Valley Indoor Farms and the Apache Hemp R&D Project 2019. Mr. Fant and Mr. Vargas would like to discuss ways that the County could partner with these endeavors.

Conclusion

N/A

Recommendation

It is recommended that Mr. Fant and Mr. Vargas be provided an opportunity to share information on the activities of the Cobre Valley Indoor Farms and the Apache Hemp R&D Project 2019.

Suggested Motion

Information/Discussion regarding the activities of Cobre Valley Indoor Farms and the Apache Hemp R&D Project 2019. **(Elvin Fant/Charles Vargas)**

Attachments

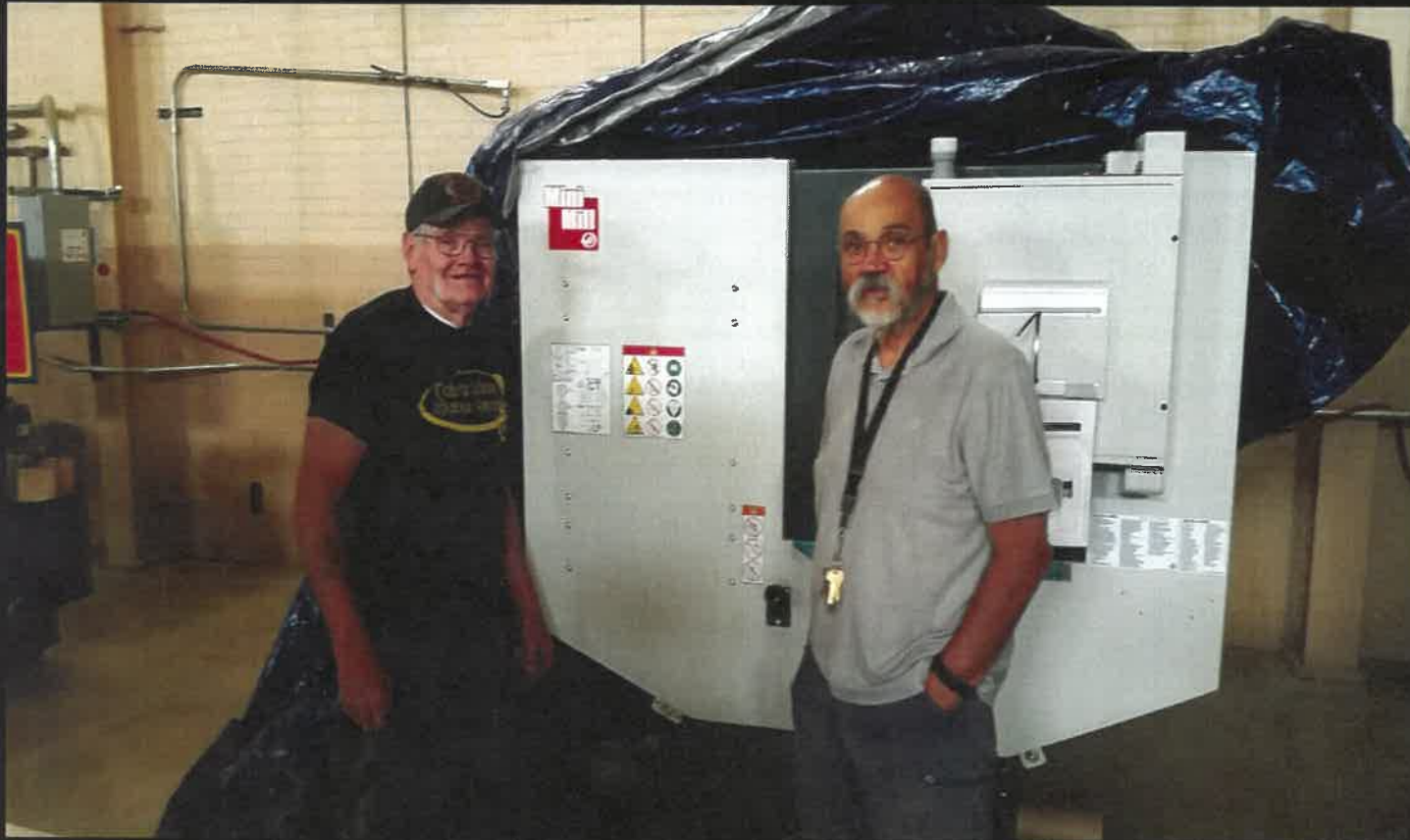
New Presentation - At Meeting

Hemp Project Presentation

Apache Hemp R&D Project 2019

Uses of Industrial Hemp

Incubating Solutions For The Next 7 Generations



5 PILLARS OF SUCCESS

7 GENERATIONS

REMEDATION
C.S.R.

STAKEHOLDERS

PRAGMATIC
SOLUTIONS

2022 GOAL
POSITIVE
IMPACT



7 GENERATIONS



THE VERY USEFUL INDUSTRIAL HEMP

Hemp cultivation requires no chemicals, pesticides or herbicides.

with over
50,000
different uses...

HEMP SEEDS

HULLING

HEMP MEAT



Dairy products



HEMP SHELL



Bakery Products



PRESSING / CRUSHING

HEMP OIL

Personal Care Products



Cooking Oil



Fuel / Paint



HEMP CAKE



Feed



Hemp seeds contains nutritious Polyunsaturated Fatty Acids (PUFAs) 80% the highest amount found within the plant kingdom. Highly nutritious of humans and animals.

Harvest

Intermediate processing
Further processing

HEMP is a RESOURCE

20 years for trees to mature
4 months for hemp

Hemp can yield 3-8 dry tons of fiber per acre, FOUR times what an average forest can yield.



Paper, fertilizers, soil nutrients and animal bedding can be made from leftover waste when processing hemp.

This means all parts of the plant are being used, or put back into the earth.

HEMP STALKS

DECORTICATING

HEMP FIBER



PRIMARY (lane) Fiber

Fabric
Insulation
Carpeting
Paneling



SECONDARY

Cordage
Pulp
Recycling
Additive



TOW

Cordage
Bagging
Fiber Board



Anything made out of cotton, timber or petroleum can be made out of hemp

Hemp fiber is the strongest natural fiber in the world

HEMP HURDS



Fiber board

Compost
Mortar
Paper filler

Absorbent bedding

Chemical feedstocks - Plastics / Paint / Sealant



Hemp hurds can be cleanly converted into Gasoline!

Through a Heat Process called PYROLYSIS Hemp Biomass can also make Ethanol, Methanol & Methane Gas

REMEDIATION C.S.R.



Toxicity: Heavy Metal Exposure Through State-Sponsored Access to “la Fee Verte”

David V Gauvin*, Zachary J Zimmermann, Joshua Yoder and Rachel Tapp

Department of Neurobehavioral Sciences, MPI Research, 54943 North Main Street, Mattawan, MI 49071, USA

Abstract

Federally unregulated, Marijuana Growth Organizations (MGOs) have now provided a path to exposures to the neurotoxicity of heavy metals. The lack of US Food and Drug Administration (FDA) and US Environmental Protection Agency (EPA) testing and oversight of the MGOs now threatens the public health. Agribusiness and botany experts proclaim the value of cannabis as a perfect rotating plant for phytoremediation programs to help scavenge heavy metals from soils prior to seeding the land for food product. Cannabis has a high affinity for soil contaminants without affecting its own heartiness. However, “legal” marijuana plots have burgeoned in the “Emerald Triangle” of Northern California, Oregon and Washington. According to the FDA’s toxicology program, the largest sources of heavy metals (HMs) are the environments surrounding abandoned or active mines. The history of gold, platinum, coal, and copper mining in these grow areas now threatens the end-user; the plants ability to “scrub the earth” of these highly toxic HMs provides main stream smoke contamination to the consumer. Published reports of cannabis users showing hearing loss and neurological changes to temporal lobe structures involved in audition as well as learning and memory. The apoptotic cascade of cytotoxic events initiated by heavy metals is linked to the progression of Alzheimer’s and Parkinson’s disease, as well as hearing loss related to brain stem and temporal lobe neurotoxicity.

STAKEHOLDERS



BHP

180 West Magee Road, Suite 134
Tucson, Arizona 85704
USA
T +1 520 448 5854
F +1 520 297 6119
bhp.com

24 June 2019

Cobre Valley Indoor Farms &
Chiricahua Apache Nde Nation
143 N Miami Avenue
Miami, Arizona 85539

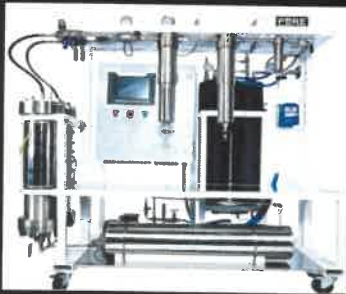
Dear Mr Fant & Mr. Vargas

Potential Industrial Agriculture Partnership

Thank you for inviting Sarah Daniel (*Principal Community*) and Daphne Place-Hoskie (*Manager Closure Planning*) to meet with you at the Cobre Valley Indoor Farms in Miami, Arizona, on 11 June. They appreciated the personalized tour of your shared facility in the old Miami Copper Company Mercantile Building. The work you are doing with hydroponics, tilapia, and self-sustaining greenhouses sounds quite interesting and innovative. I also appreciate your mutual interest in envisioning the mine impacted lands around Miami and Southern Gila County in a new way.

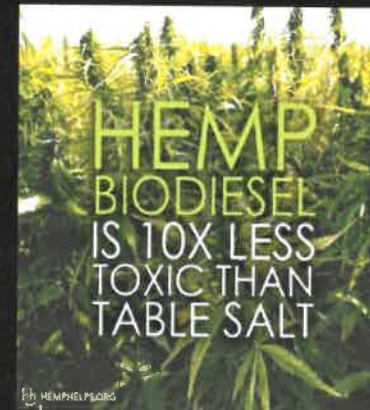


PRAGMATIC SOLUTIONS

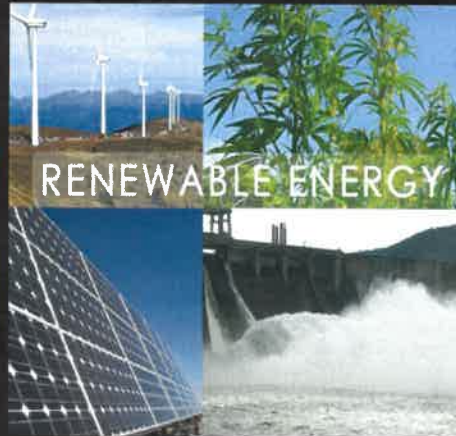


Biomass

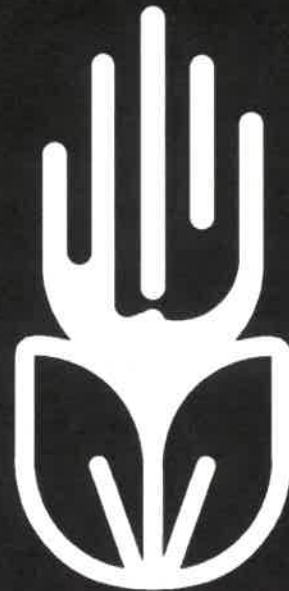
- Biomass production involves using garbage or other renewable resources such as corn or other vegetation to generate electricity.
- Biomass is grown from several plants, including miscanthus, switchgrass, hemp, corn, poplar, willow, sugarcane and palm oil.



2022 GOAL POSITIVE IMPACT



CANNApache SENTRY SOLUTION



APACHE
HEMP



Incubation Solutions for Gila County and Beyond





5 PILLERS OF SUCCESS

1. Innovative Vision
2. Expert Product Development
3. Strong Valued Partners
4. Reclaiming Our Poluted Land
5. Anxiously Engaged In a Positive Program To Prepare For The Next 1000 Years

1

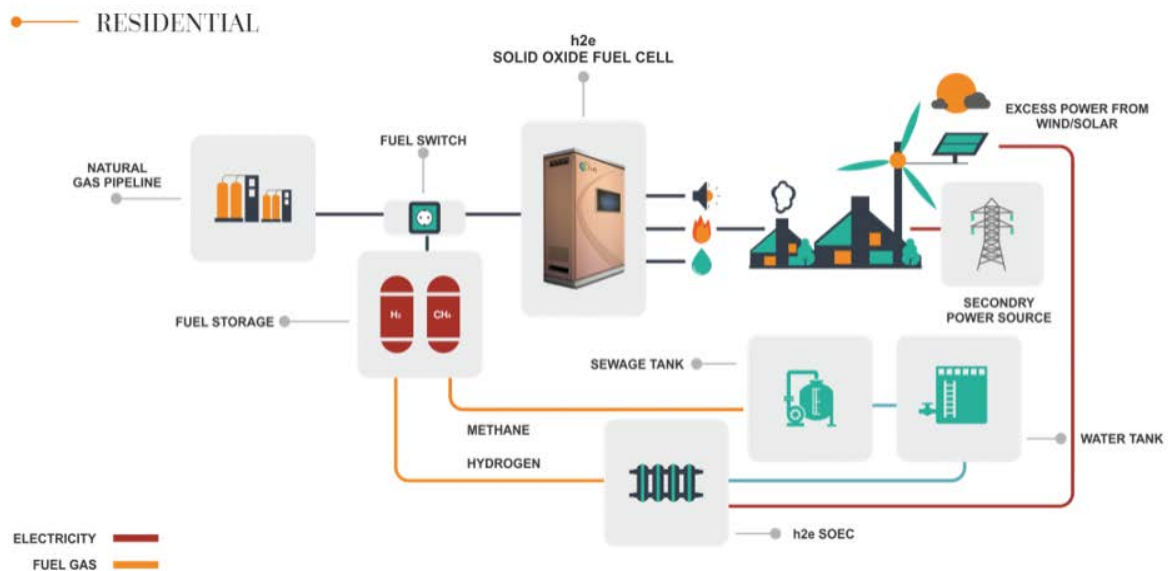
Inovative Vision

Our global vision is to educate, motivate and empower our entire community to live healthy, happy lives. We support organizations that foster the same vision towards the common good of the community.



Automation

Alternative Energy Sources



2

Expert Product Development

Utilizing state-of-the-art equipment in conjunction with over 100 years combined experience in the design, manufacturing, and repair of industrial equipment affords us with the ability to manufacture all of the required processing equipment.



3

Strong Valued Partners

Over the last year and a half a multitude of Valued Partners have participated in our program: University of Arizona....Arizona Dept of Agriculture....Gila County....Local businesses....Communitied minded individuals and much more. These partners have caught our vision and are quickly converting to Shareholders

Dr. Cuello University of Arizona



Mike Pastor Easter Arizona

Reclaiming Our Poluted Land

For decades stacked upon decades man has all but completely desiccated this wondrous place we call "Earth". We do not hold title to this real estate, we are merely the trustees. That trusteeship was granted by our Creator for us to learn the proper methods and techniques to fulfill that great responsibility. When we were children, we spoke as children, we understood as children, we thought as children, but now that have grown into adulthood we must put away our childish ways. The miracle plant "HEMP" is the God given tool that will act as a giant eraser, eliminating most of the damage incurred by our antiquated mining and farming techniques.

Hemp Harvesting



Hemp harvesting on Rhine bank. Created by Lallemand, published on L'illustration, Journal Universel, Paris, 1860

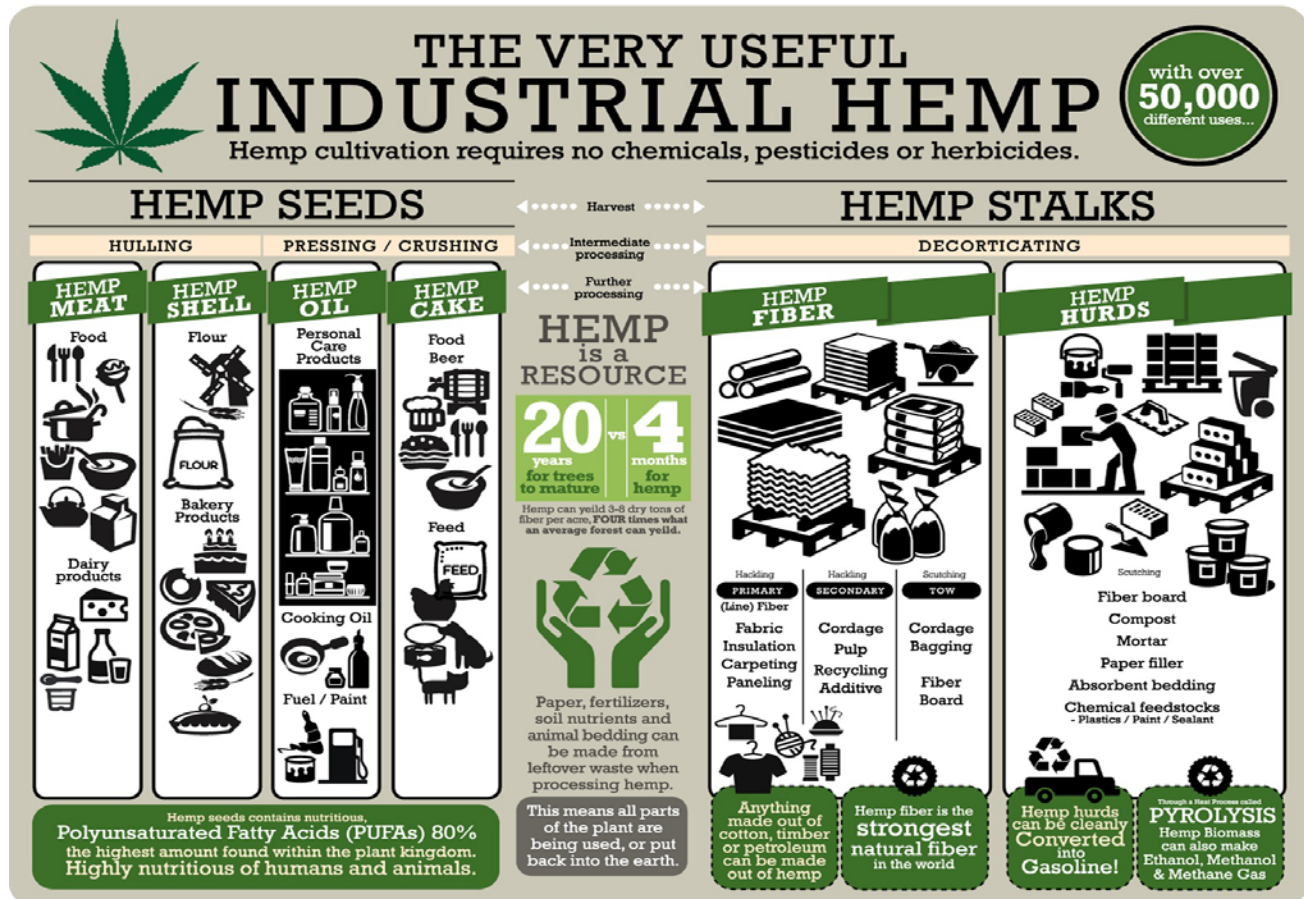
Confident Doctor Posing In A Hemp Field



Confident female doctor with clipboard posing in a hemp field, alternative herbal medicine concept

Anxiously Engaged In a Positive Program To Prepare For The Next 1000 Years

We are meeting this challenge HEAD ON. We are replacing the old flat head Ford with a band new, super charged, high tech economic engine. Gila County will be the catalysts that takes our model to the rest of the world.





APACHE HEMP R&D PROJECT 2019



6-1-2019

APACHE HEMP R&D PROJECT

Contents

Opportunity: Apache Sentry Canna.....3

Management.....4

Foundation's Design focus and why it is important.....5

Summary.....5

Primary Stakeholders:5

How our communities uniquely overcome these issues.....6

Solution For Seven Generations.....6

Current Statis.....7

Reasons For Community Invested Trust.....7

How Apache Canna makes revenue.....7

How does Seed to Consumer Certification Garentee's Apache Sentry Canna.....8

One Quarter Development Program..... 10

OPPORTUNITY: APACHE CANNA

- Audit Compliance is the 9th largest economy in the US.

Apache Sentry Logical web platforms are self determined Indian owned and managed. Host and institutionalize the cannabis business value chain integrating a “seed to sale” enterprise solution. The solution operates on behalf of industry segments similar to other quasi-government institutions operated by the Central Bank (“the Fed”) and the US Postal Service.

A single pane of glass enables accessibility and the economics accountability from seed bank, additives, growers, harvesting, transporters, warehousing, to distribution, consumers with value add taxation events.

Apache Canna APIs connect various accountability capabilities e.g., point of sale inventory, CRM, management, financials, to industry registration, onboarding and HR management.

Apache Sentry Application

- Applicants:
 - Charles Vargas, Apache Resource Management A.R.M. A 501c3
- Email:
 - CVargas@chiricahuaapache.org
- LinkedIn:
 - <https://www.linkedin.com/in/charles-vargas-apache>
- Business entity:
 - Chiricahua Apache Nde Nation, a 501c3 IRS registered to code, and Cobre Valley Indoor Farms cooperative organizations to form as – dba Apache Canna
- Venture Focus Area(s)
 - Advertising/ marketing
 - Consumer branding
 - Cultivation
 - Data analytics
 - Data processing hardware
 - Dispensary
 - X eCommerce
 - Grow tech/ ag tech
 - Hard science/ genetics
 - Infused product
 - Media
 - Social network
 - X Software Reuse with API of high value Apache Sentry applications
 - Other: e.g., Risk and fraud reduction, quality assurance, 24/7 Apache Sentry, critical software and data with disaster recovery/ business continuity and security.
- Planned Resources
 - Founders (2), Advisor (10), Principal Developer (1)

MANAGEMENT

- Charles Vargas, General Manager Operations
 - 35 Years global trade experience in IT Strategy, Data Center Development, Apache Cloud and IT Infrastructure, Disaster Recovery/ Business Continuity, Clients supported by Apache Open Source Community. Managed by direct teams of 5 to 95 consultants. Manage software alliance and vendor negotiations for APIs
 - 30 Years Open Source TCP/IP engineer developer, Service and software planning and market launch in data centers and cloud including data base software infrastructures.
 - 33 Years Contributor Apache Foundation
 - 20 Years Founding member of the Apache Nation Chamber of Commerce A.N.C.C. including foreign subsidiaries.. Advisor for startups and all Trade / Business development. Indian Native American Trading Right Foundaiton.
 - General Management A.R.M. - L'Ei L.L.C. – C.V.I.F. - Unity Farms 501c3

Elvin T. Fant, L'Ei a L.L.C. & Unity Farms a.k.a. Cobre Valley Indoor Farms a 501c3 duo

- 20 Years Owner Operator L'Ei a CNC a Digital Technologies Camercial Machine Shops and Factories.
- Business Manager L'Ei – C.V.I.F.- Unity Farms – Apache Farms
- 55 Years of Manufacturing Management Expertise for Industrial Manufacturing and Processing
- Copper-Gold-Silver Mines contractor and Emergency Status Contractor for local smelter as Critical Shop First Respondes; oriented for Single Source Growth by centralizing machine shop equipment, specialist training, creating Local Carreer Opportunities by hiring from the communities San Carlos, Globe, Claypool, Miami and the surrounging region and by contracting in the greater industrilzed mineral zones of the United States.
- D.O.D. Including F.A.A., and Boarder Agency Status government contracting as Indian-owned and Managed Business seeking supply contractes with all federal agencies.

COMPANY DESIGN FOCUS AND WHY IT IS IMPORTANT

The target market is the legal medical and industrial Cannabis Hemp US domestic and international demands. Apache Sentry Canna Enterprise Resource Planning ERP hereafter software will be an effective tool to ensure transparency and track sourcing, giving consumers and growers trust. It is necessary to ensure confidence that fraud is not occurring in the supply and sales chain.

Growers, retailers, consumers and other industry stakeholders (e.g., Soverien Indian Nations Self Determined, B.I.A. Tribal NSN, health services, tax law and collection, law enforcement, water, USDA, FDA, DOC, Tribal financial institutions, government

regulators) require transparency and confidence in the operations reporting and management to properly maintain the industry.

Provide the industry an integrated architecture capable of accommodating the evolving needs of growers, transport, distributors, customers, compliance, feature code changes, fee based Indian owned and operated services and data privacy.

- Incorporate scalability and performance.
 - Incorporate a testing regime that includes integration and corner cases.
 - Enable proper self governance requiring reporting and identifying regulatory base controls from the entire seed to sales work flow.
- Regulators
 - The traditional approach to the Chiricahua Apache Nde Nation's lack of integration of "best practices" and or application code, lack of realizing the data and process identification necessary to identify and exploit profit and loss points in the "seed to sale" business flow, required development of Intelligent Tracking Apache Sentry Canna ERP Systems to ensure absolute accountability and transparency.
 - The Apache Sentry Canna ERP design requirement includes techniques to identify fraud patterns.
 - The result will be a reliable value chain and profitability.
 - Address regulatory compliance needs with a system of documented upgradable cannabis hemp middleware, Apache Sentry Canna are reusable secure applications, quality, reliability and safety for growers and retailers.
-

SUMMARY

PRIMARY STAKEHOLDERS:

Release 1: Growers and retailers

Release 2 : Apache Nation and or State regulators, distributors, financial institutions

Apache Sentry Cannabis Hemp is a management software supports agricultural growth, inventory, transport, processing, distributors, retail, regulatory compliance and reporting for medical cannabis hemp, by products textile, CBD oil products in the US domestic and International markets and is protected as Sacred under Apache Nation Protocol (Law).

Future features considered for expansion []:

1. P-CANN-1 2019 for growers and retailers
 2. P-CANN-4 2019 for shippers, distributors, financial institutions, regulatory, reporting,
 3. ID management software for onsite and offsite identification add-on feature (under development)
 4. Analytics engine for select process steps as an add-on feature (under development)
 5. Expand Apache Canna Sentry software to medical and commercial distribution chain.
 6. Expand Apache Canna Sentry software market to Canada and other countries that legalize cannabis hemp oil CBD use
-

HOW OUR EFFORTS UNIQUELY SOLVES THESE ISSUES

Apache Canna Sentry under Apache Resource Management Regulation is designed with (1) a life cycle approach to Cannabis Hemp Regulatory Standards designed to (2) integrate and support requirements specific to each stage as the stages find market advantage, change and mature.

- Company engineering follows a service provider model:
 - Technology is focused on meeting business objectives
 - Standardize on effective technology tools (“buy if possible, build if necessary”) for API to existing 20 + high value Apache Resource Management Regulatory software components
 - Simplify configuration management to reuse algorithms and code where possible
-

SOLUTION COMPARED TO COMPETITORS

Follows an enterprise process: Production tracking, processing, packaging, shipping, inventory, retail point of sale

- Build in regulatory compliance mechanisms real time reporting.
 - Agile development
 - Software development requirements and solutions evolve through collaboration between self-organizing, cross-functional teams.
 - Promotes adaptive planning
 - Prioritization of Apache Sentry apps to meet industry user needs
 - Apache Sentry App is an Indian owned ISV Independent Software Vendor; software component contracts for long term access
 - Evolutionary development
 - Early delivery
 - Continuous improvement
 - Encourages rapid and flexible response to change
 - Build a data management model to meet geographic and privacy regulatory needs
 - Build for Apache Cloud hosting with on premise cloud option
 - Manage capacity
 - Systemically instrument the system
 - Monitor and report system usage
 - Characterize the workload for scalability
 - Predict performance
 - Test APIs to Apache Sentry applications are regulatory compliant under the Apache Resource Management Regulatory standard in reporting.
 - Review code design for lowest cost, higher performance
 - Business continuity and disaster recover for 24/7 operations
 - Data Security and access management
-

CURRENT STRATEGIES

- Over the next months to plan development costs and increase software expandability for future features

- Reviewed options for Cannabis Hemp CBD under Apache Resource Management Regulation and database integration to Apache Sentry Canna ERP application reuse opportunities
 - Reviewed potential alliances
 - Aligning our resources to launch this startup
 - Active recruitment of a qualifying Apache developer to create the engineering and test software
 - Finalizing our strategy to launch
-

REASONS FOR INVEST ED TRUST IN MERITOCRACY PROTOCOLS

1. Repeatable, sustainable and scalable software
 - a. Automates Cannabis Hemp Products and CBD business and audit compliance including reporting while reducing development, change, test and support complexity
 2. "End to End" design creates and competitively meet or exceed Cannabis Hemp industry Enterprise Resource Planning requirement
 - a. Includes community development team approach and engineering for custom adaptation for industry and Apache Regulators financials, inventory, personnel management, sales management, point of sale, and low-cost integration by API reuse to existing Apache Sentry Canna applications
 3. Increases opportunity for market use, agency adoption and government sanction
 - a. Increases "follow the money" tracking of "seeds to sales" in society at large, enhancing law enforcement of illegal operations as well as sanctioned industry insight into funds movements by Apache Nation regulated banking institutions and Federally regulated banking institutions
 4. Strong exit opportunity
 - a. Enterprise managers Apache Resource Management is a 501c3 protected under 25CFR federal government codes under Nation to Nation relationship; Treaty Rights; Rite of passage for self determined independent Apache Indians.
 - b. Large integrators / auditing companies consulting on cannabis hemp acquisitions / post Apache integration in the cannabis hemp medical and commercial industry
 5. Personnel experience
 - a. Timeline oriented
 - b. Experience leveraging existing software components, compliance components, PCI and other standards, resiliency testing
 - c. Strong experience researching emerging markets and industries, and launching effective enterprise solutions for industry, public, and all governance
-

HOW CANAERP MAKES REVENUE

- Early customers are small to medium sized businesses. Initial revenue can be collected from the following customer types:
 - Growers, retailers.
- CanaERP expects early adopters generating revenue:
 - Release 1 Q1 2019 Growers and retailers as Apache Sentry Canna Apps users.
 - Release 2 Q4 2019 Apache Resource Management's Regulatory Standards for controlling cannabis hemp products and shippers, distributors, financial institutions,

- Apache Regulatory reporting the movement of cannabis products through the supply chain
 - Apache Resource Management's Trade Commission are Cannabis Hemp Regulator for audit and adherence
 - Chiricahua Apache Nde Nation and State Legislature for statistics
 - Chiricahua Apache Nde Nation and State Health and Agricultural Agency
 - Chiricahua Apache Nde Nation and State Enforcement
 - Chiricahua Apache Nde Nation to Federal Future when ready
 - With increased adoption of the Apache Canna ERP software, Apache and other regulating agencies can recognize the effectiveness of the Apache Canna ERP ledger tracking the supply chain. Apache Canna ERP can lobby for the use of the software to monitor the production and distribution of cannabis, increasing and generating revenues greatly simplifying the auditing process for all.
-
- ID access and management software add-on feature (under developed)
 - Analytics engine for select process steps as an add-on feature (under developed)
 - Expand Apache Canna ERP software to medical
 - Expand Apache Canna ERP software market to Canada and other countries that legalize recreational cannabis use
-

HOW DOES APACHE SENTRY CANNA HELP

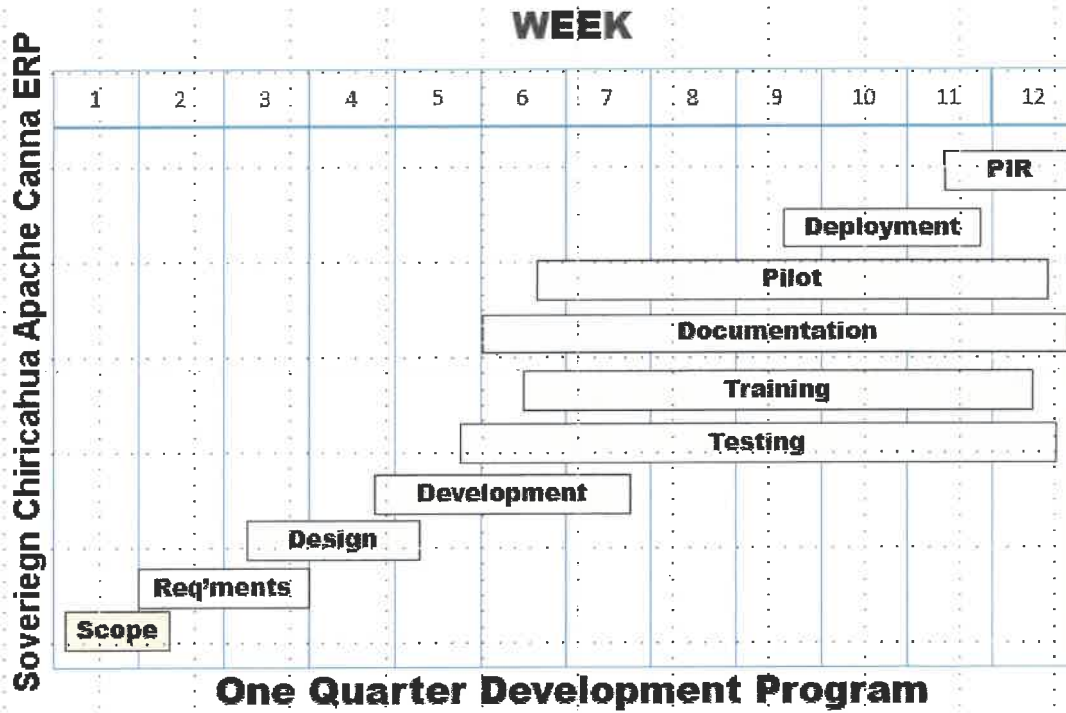
- Qualified introductions which open access to Cannabis Hemp industry advisors to accelerate to socialize Apache Sentry Canna under Apache Resource Management as a high value solution impacting industry integration for positive over all economic growth.
- Access to Cannabis industry buyer and user personas to include in our software the highest value requirements from industry:
 - **Growers Release 1**
 - **Retailers Release 1**
 - Release 2 Q4 2021 for shippers, distributors, financial institutions, Apache regulators, apache trade export or import,
 - Release 3 ID management for access software add-on feature (under development)
 - Release 4 Analytics engine for select process steps as an add-on feature (mostly developed)
 - Release 5 Expand Apache Canna ERP software to medical and processing
 - Release 5 Expand Apache Canna ERP software market to Canada and other countries that legalize recreational cannabis use
- Help from Apache Foundation's protocols for completing Apache Canna ERP development, initial partial software proof of concept funding and limited travel for developers to Chiricahua Apache Indian Land and to developer locations, then customer review
- Access to some of the infrastructure needed (i.e., Apache cloud)
- Participate in 1 October 2019 to 1 February 2021 Apache Canna accelerator program with using input for product and launch development
- Benefit from Apache protocol guidance and contacts, and the accelerator program to build an agile fast product
- Network opportunities with government regulators and requirements

- Strong and tested Apache Canna ERP solution with export opportunities in 2021 for Apache Canna ERP and Apache Canna principals
-

Milestones and Deliverables for 1 October 2019 to 1 February 2021 for medical and commercial cannabis hemp industry

Days	Project Starting Date 10/1/2019 to 2/1/2021 for Release 1
256	Software Development Apache Sentry Canna ERP Integration Market
8	Scope
32	Analysis Apache Sentry Canna ERP integration Requirements
32	Design Apache Sentry Canna ERP, Alliance Agency integration if any
56	Development
96	Testing
96	Training
60	Documentation
96	Pilot – Complete Apache Sentry Canna release 1 1
12	Deployment
8	Post Implementation Review (PIR)

ONE QUARTER DEVELOPMENT PROGRAM





Cobre Valley Indoor
Farms



INDUSTRIAL HEMP

Hemp cultivation requires no chemicals, pesticides or herbicides.

with over
50,000
different uses...

HEMP SEEDS

HULLING

HEMP MEAT

Food



Dairy products



HEMP SHELL

Flour



Bakery Products



PRESSING / CRUSHING

HEMP OIL

Personal Care Products



Cooking Oil



Fuel / Paint



HEMP CAKE

Food
Beer



Feed



Harvest

Intermediate processing

Further processing

HEMP
is a
RESOURCE

20 vs **4**
years for trees to mature
months for hemp

Hemp can yield 3-8 dry tons of fiber per acre, **FOUR** times what an average forest can yield.



Paper, fertilizers, soil nutrients and animal bedding can be made from leftover waste when processing hemp.

This means all parts of the plant are being used, or put back into the earth.

Hemp seeds contains nutritious, Polyunsaturated Fatty Acids (PUFAs) 80% the highest amount found within the plant kingdom. Highly nutritious of humans and animals.

HEMP STALKS

DECORTICATING

HEMP FIBER



Hacking
PRIMARY
(Line) Fiber

Fabric
Insulation
Carpeting
Paneling



Anything made out of cotton, timber or petroleum can be made out of hemp

Hacking
SECONDARY

Cordage
Pulp
Recycling
Additive

Scutching
TOW

Cordage
Bagging
Fiber Board

Hemp fiber is the **strongest** natural fiber in the world

HEMP HURDS



Fiber board

Compost

Mortar

Paper filler

Absorbent bedding

Chemical feedstocks
- Plastics / Paint / Sealant



Hemp hurds can be cleanly **Converted** into **Gasoline!**



Through a Heat Process called **PYROLYSIS** Hemp Biomass can also make Ethanol, Methanol & Methane Gas

ARF-5535

2. B.

Work Session

Meeting Date: 06/25/2019

Submitted For: Steve Sanders, Director

Submitted By: Shannon Boyer, Executive Administrative Asst.

Department: Public Works Division: Recycling & Landfill Management

Information

Request/Subject

Discuss landfills and current state of recycling and update on Dollar Day

Background Information

Discuss landfills and recycling history and future landfills and recycling along with implementation of Dollar Day.

Evaluation

n/a

Conclusion

n/a

Recommendation

n/a

Suggested Motion

Information/Discussion regarding County landfills, the current state of recycling, and an update on the Dollar Day Recycling Program. **(Steve Sanders)**

Attachments

No file(s) attached.
